

REGENERATE. *Restore.* REBUILD.

Advanced peptide-powered microneedling serum designed to support skin repair, collagen stimulation, and visible rejuvenation.



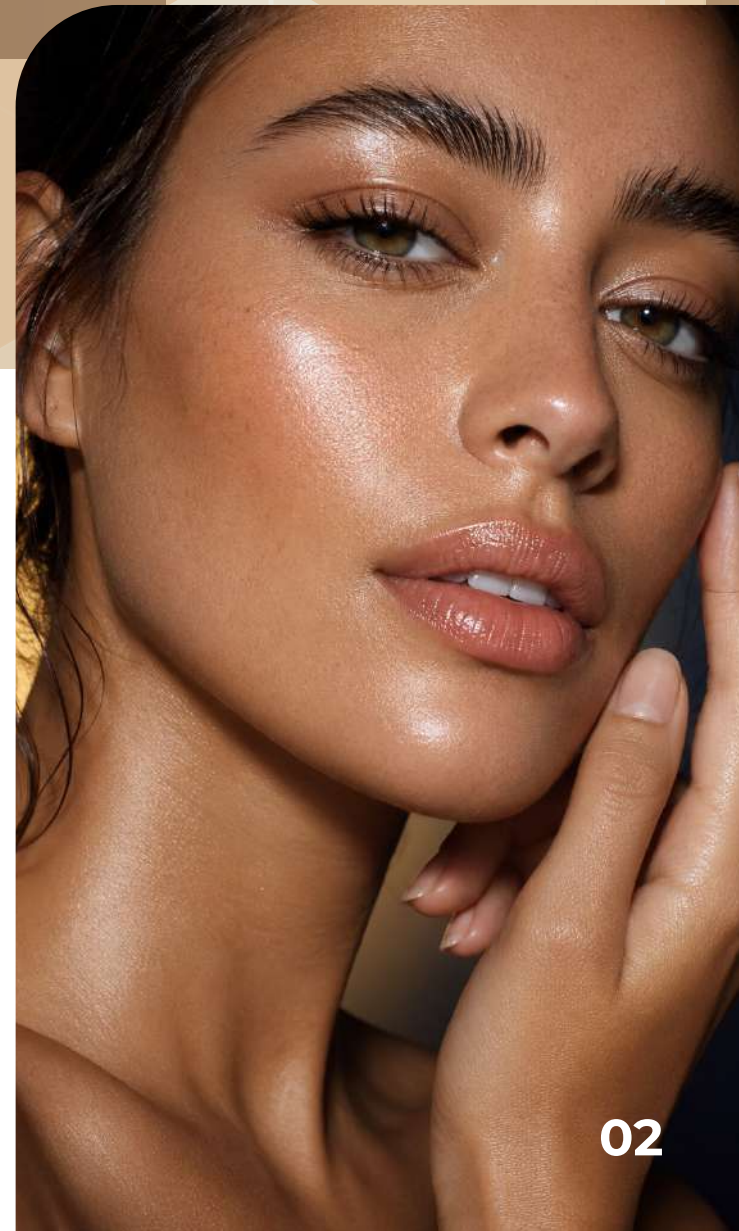
Cu restore

PEPTIDE SERUM

What is CU Restore?

CU Restore is a high-performance microneedling serum developed to support visible skin renewal, hydration and repair. The formula has been created to work with controlled micro-channel delivery, allowing active ingredients to absorb more effectively than traditional topical skincare.

Unlike standard creams or serums that sit mostly on the surface of the skin, CU Restore is designed to complement microneedling protocols. When used with a professional microneedling device or a 0.5mm precision stamp, the serum can be applied during a process that temporarily creates micro-channels in the skin, helping improve ingredient delivery and supporting the skin's natural renewal response.



The Science

BEHIND CU RESTORE

Healthy, youthful-looking skin depends on strong collagen, good hydration, balanced repair processes and a smooth, resilient skin barrier. Over time, ageing, UV exposure, inflammation, environmental stress and lifestyle factors can reduce skin quality, leaving the complexion looking dull, dry, uneven or less firm.

GHK-Cu
Copper Peptide

Hyaluronic Acid

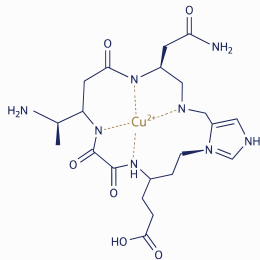


Hexapeptide-8

CHEMICAL COMPOSITION

GHK-Cu

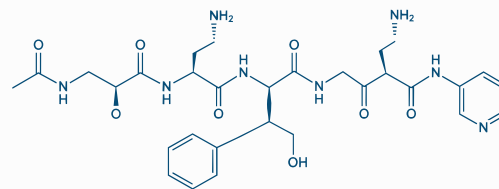
COPPER PEPTIDE



The formula contains GHK-Cu, a copper peptide widely used in advanced skincare for its role in supporting skin repair, firmness and visible renewal.

Hexapeptide-8

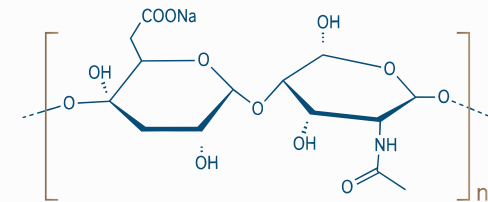
ACETYL HEXAPEPTIDE-8



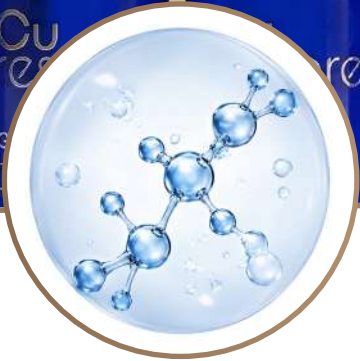
Hexapeptide-8 helps soften the appearance of expression lines by supporting a smoother-looking surface.

Hyaluronic Acid

SODIUM HYALURONATE



Hyaluronic Acid helps draw moisture into the skin, improving hydration, comfort and visible plumpness.



GHK-Cu

COPPER PEPTIDE

A naturally occurring tripeptide bound to copper, clinically researched for its ability to support skin repair and rejuvenation.

- ✔ Supports collagen & elastin production
- ✔ Promotes skin repair & renewal
- ✔ Helps reduce visible signs of ageing

Hexapeptide-8

ACETYL HEXAPEPTIDE-8

A high-performance peptide known to support a smoother-looking complexion and reduce the appearance of expression lines.

- ✔ Helps soften fine lines & wrinkles
- ✔ Promotes smoother, more refined skin
- ✔ Supports a youthful appearance

Hyaluronic Acid

SODIUM HYALURONATE

A moisture-binding molecule that helps attract and retain water in the skin for optimal hydration.

- ✔ Deeply hydrates & plumps the skin
- ✔ Improves skin texture
- ✔ Enhances natural radiance & glow

The Results

What **Cu restore** PEPTIDE SERUM Helps Improve

Fine Lines and Wrinkles

CU Restore helps improve the appearance of fine lines by supporting hydration, skin smoothness and collagen-focused rejuvenation. When used consistently as part of a treatment course, it can help the skin appear firmer, fresher and more refined.

Skin Texture

Uneven texture, roughness and enlarged-looking pores can make the skin appear dull and aged. CU Restore supports smoother-looking skin by combining microneedling stimulation with targeted active ingredients.

Acne Scarring and Post-Blemish Texture

Microneedling is commonly used in clinics to improve the appearance of textural acne scarring. CU Restore can be used as part of a structured rejuvenation protocol to support skin repair and improve the look of uneven skin.

The 0.5mm

NEEDLE STAMP ADVANTAGE

CU Restore can be paired with a precision 0.5mm needle stamp for controlled at-home maintenance. This makes it ideal for clients who want to support their professional results between clinic visits.

Why Use a Stamp Instead of a Roller?

A stamp allows more controlled, vertical application. This can help reduce unnecessary dragging across the skin and makes it easier to target specific areas such as cheeks, forehead, smile lines, acne marks and areas of uneven texture.

The 0.5mm stamp is designed to create shallow, controlled micro-channels that help improve serum absorption while keeping the treatment simple and manageable for home use.

- ✓ *Controlled application*
- ✓ *Helps extend clinic results*
- ✓ *Targeted serum delivery*
- ✓ *Ideal for structured treatment plans*

IN-CLINIC PROTOCOL

CU Restore can be used as part of professional microneedling treatments in clinics, aesthetic practices and skin rejuvenation settings. The 5ml sterile serum vials are designed for clinical protocols where hygiene, consistency and treatment quality are essential.

Professional Use Benefits:

1. Supports premium microneedling treatments
2. Adds value to skin rejuvenation protocols
3. Positioned as an advanced peptide upgrade
4. Works well within treatment courses
5. Can be paired with aftercare and home maintenance kits
6. Encourages repeat appointments and client retention

Clinics can use CU Restore as a hero serum within treatment plans for ageing skin, dullness, acne scarring, dehydration, uneven texture and general skin rejuvenation.

AT HOME PROTOCOL

CU Restore is also suitable for at-home maintenance when used with the 0.5mm precision stamp system. This allows clients to continue supporting their skin between clinic treatments.

Professional Use Benefits:

1. Maintains treatment results between appointments
2. Improves consistency in skincare routines
3. Gives clients a professional-feeling home treatment
4. Supports hydration, glow and texture
5. Creates an ongoing product revenue opportunity for clinics



Cu
restore
PEPTIDE SERUM

LPG EXCLUSIVE
CLINICS WHOLESAL

ADVANCED PEPTIDE MICRO NEEDLING SERUM

Professional skin regeneration, powered by peptide science.

CU Restore™ is an advanced microneedling serum designed to support skin repair, hydration, collagen stimulation and visible rejuvenation. Formulated with GHK-Cu Copper Peptide, Hexapeptide-8 and Hyaluronic Acid, it helps improve the appearance of fine lines, dullness, uneven texture, dehydration and loss of firmness.

Created for both professional clinic treatments and structured at-home maintenance, CU Restore bridges the gap between in-clinic results and ongoing skin support.

Regenerate. Rebuild. *Restore.*

